



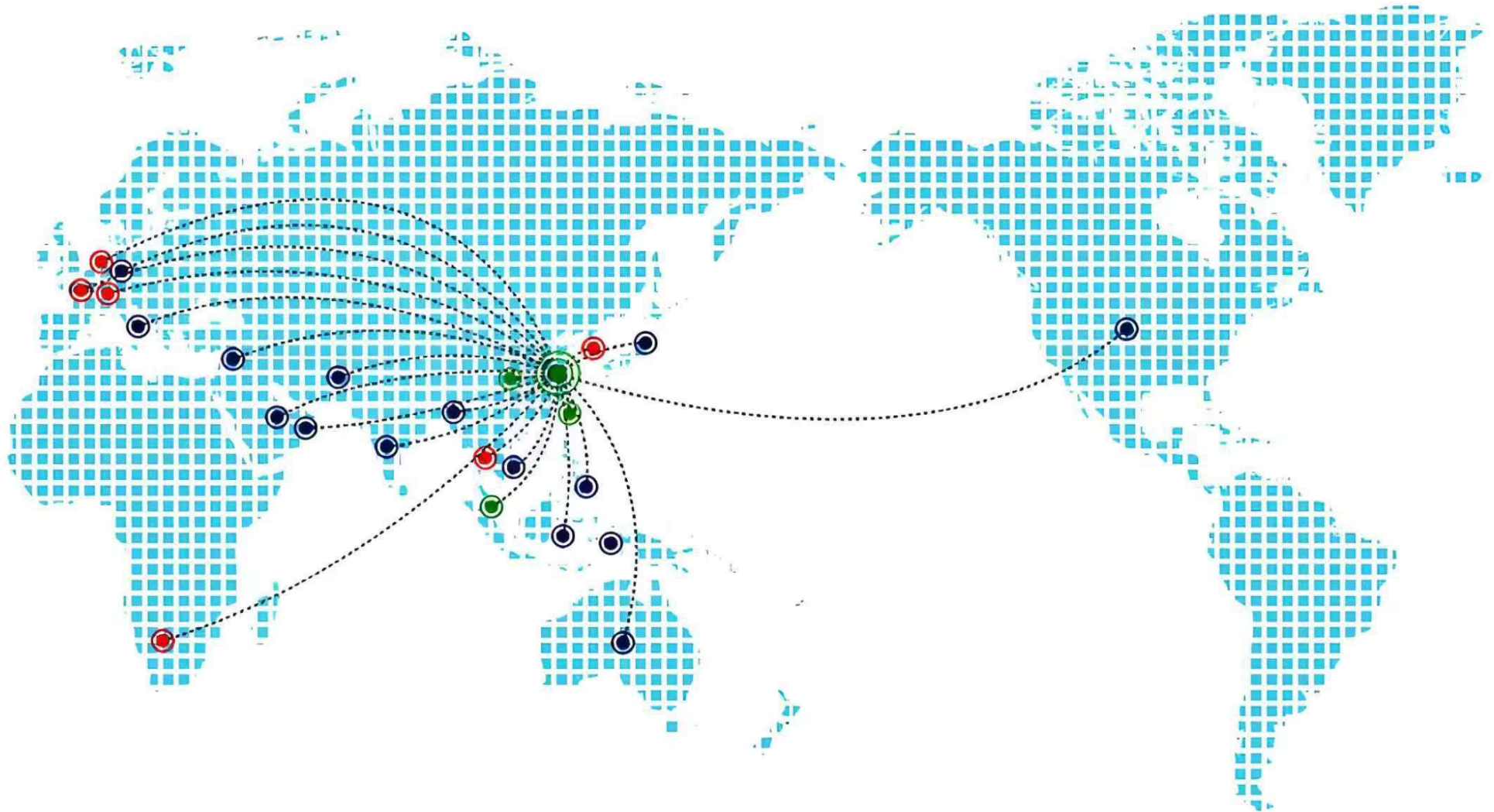
GRAYCORE

— WHOLESALE —

- We are a privately held premium company with over 18 years of experience.
- We operate design and marketing teams across Asia and North America.
- We maintain modern manufacturing facilities in China and Southeast Asia.

Butcher Blocks | **Floating Shelves** | **Acoustic Panels**

Global Marketing Map



INSIDE WORKSHOPS



INSIDE WORKSHOPS



成品车间远景
View of Finished Products Workshop



涂装机
Coating Machine



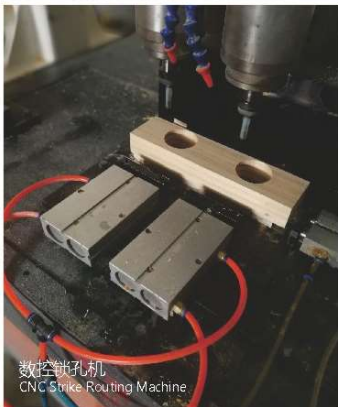
履带式双端铣
Chain feeding Double End Tenoner



喷漆生产线
Painting Production Line



砂光生产线
Sanding Production Line



数控锁孔机
CNC Strike Routing Machine



重型砂光机
Heavy power Sanding Machine



履带式双端铣
Chain feeding Double End Tenoner



涂装烘干系统
Coating and Drying System

FACTORY AND WORKSHOP VIEWS



WOOD SPECIES



Walnut



Hevea



Birch



Senna



White Oak



Red Oak



Acacia



Beech



Thermo Beech



Ash



Thermo Ash



Maple

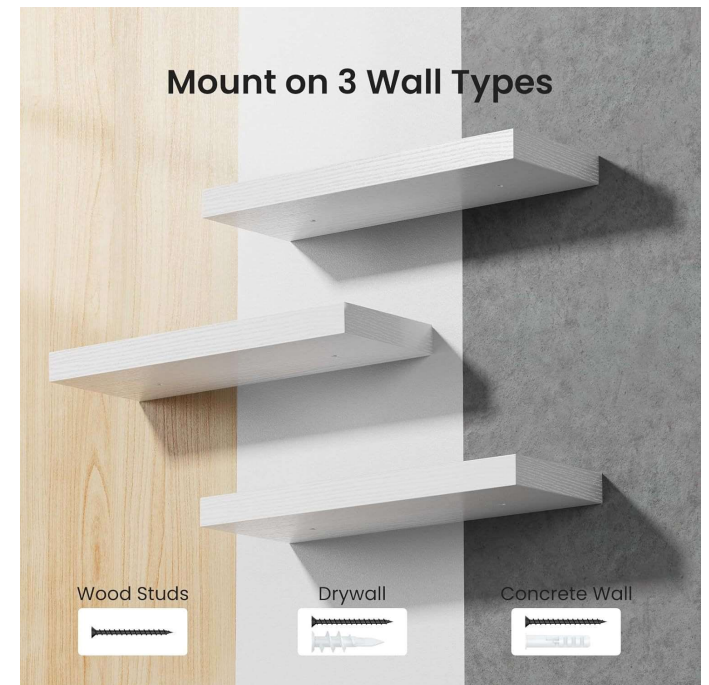
Butcher Blocks



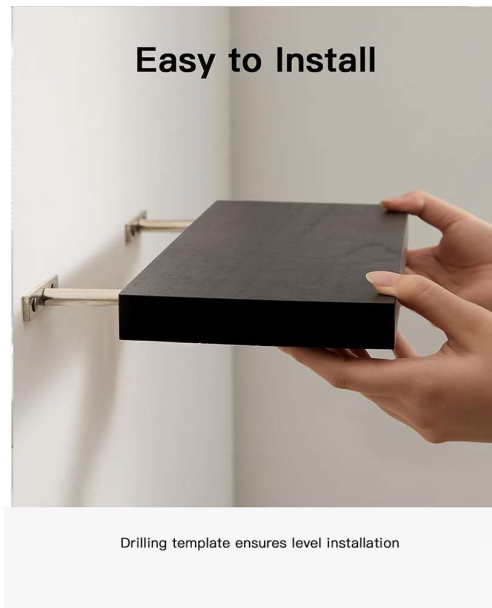
Butcher Blocks



Floating Shelves



Floating Shelves

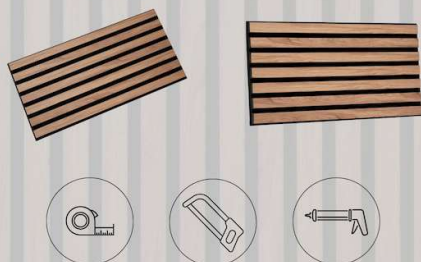


Installation steps:

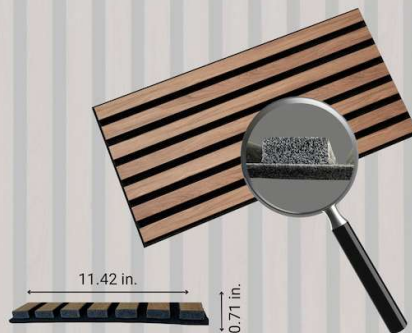
1. Mark first, then insert
2. Insert expansion bolts
3. Screw in the screw
4. Insert the wooden board, installation complete

Acoustic Panels

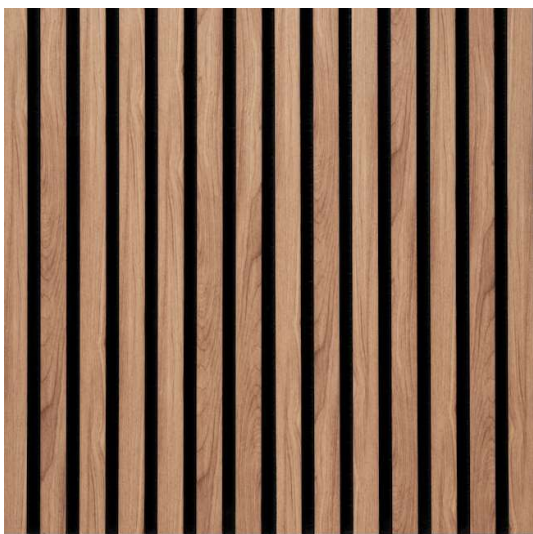
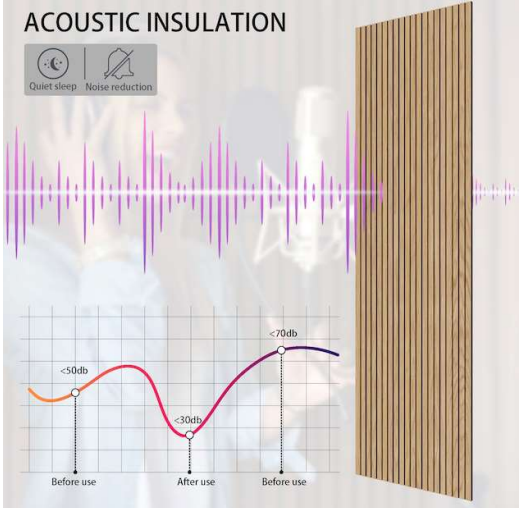
Easy Installation



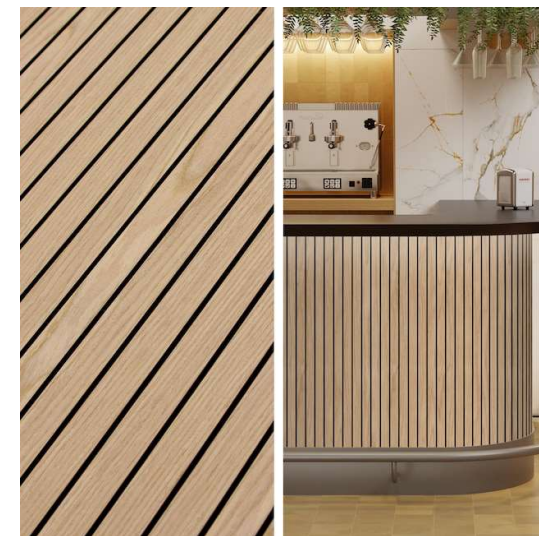
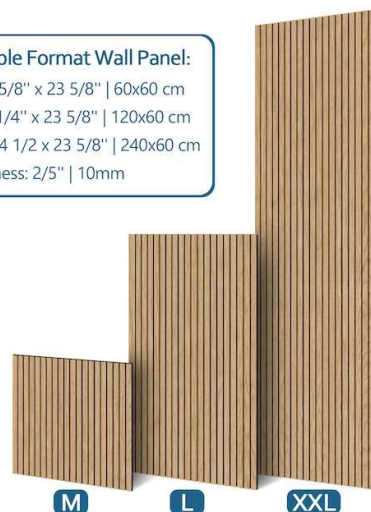
Product Dimensions



Product Dimensions



Multiple Format Wall Panel:
M: 23 5/8" x 23 5/8" | 60x60 cm
L: 47 1/4" x 23 5/8" | 120x60 cm
XXL: 94 1/2" x 23 5/8" | 240x60 cm
Thickness: 2/5" | 10mm



Acoustic Panels

